







## House & Land

Hamilton 222Q - Newport Facade

**\$762,438\***

Home Size: 222.26m<sup>2</sup> | Lot Size: 381m<sup>2</sup> | 12.5m x 30.5m Lot

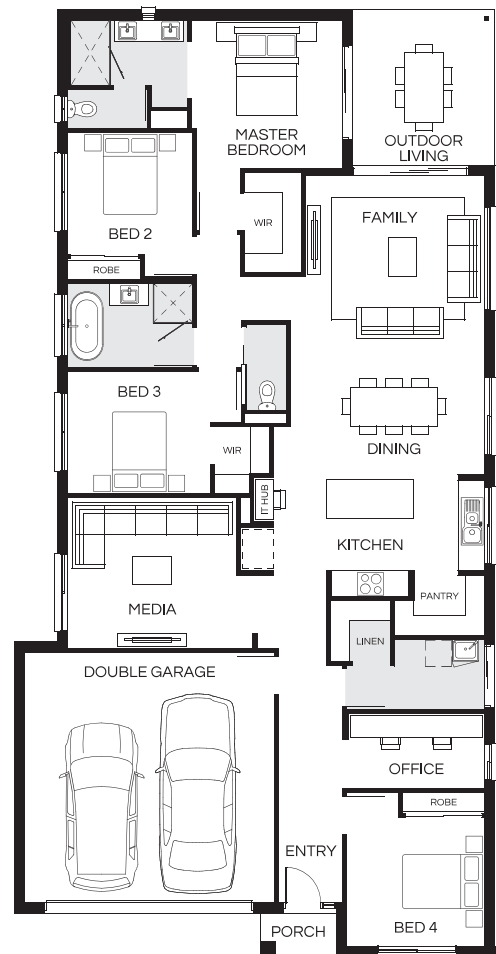
 4
  2
  2
  2

Facade image may depict features such as landscaping, furniture, window treatments, lighting and colours which are not included in the package price or which are not available from Coral Homes.

Lot 19 Hawk Street, Morayfield | Summerstone Estate


### House & Land Package Inclusions

- ✓ Designer Solutions (Option 1) price reduction included in this price\*
- ✓ Site Cost Allowance
- ✓ Caesarstone benchtops to kitchen, bathroom and ensuite
- ✓ European designed stainless steel kitchen appliances
- ✓ Semi-frameless shower screen to bathroom and ensuite
- ✓ Stained timber feature front entry door
- ✓ Integrated tiled concrete slab to Outdoor Living Area and Porch
- ✓ Mirror sliding doors to robes
- ✓ Steel frame and Steel Roof
- ✓ Carpet and Tiling
- ✓ Exposed aggregate driveway
- ✓ 70m<sup>2</sup> turf to home
- ✓ Clothesline & Letterbox



**Andrew Walker**

New Home Consultant

 0448 051 976

 a.walker@coralhomes.com.au

**CORAL  
HOMES**

\*Pricing shown is inclusive of Designer Inclusions offer "Designer Solutions" when selecting Option 1 (Price Reduction). Please refer to full terms and conditions <https://coralhomes.com.au/terms-conditions/>. Floorplan is indicative only, conceptual in nature and subject to change. Floorplan may depict fixtures, fittings, features, finishes, inclusions, furnishings, vehicles and/or other products which are not included in the house design, not included in the package price and/or not available from Coral Homes. \*Price shown is based on Coral homes Brisbane, Gold Coast, Sunshine Coast region price list dated 01-10-2024. Land price at the time of printing is Land price at the time of printing is \$410,000. Price shown does not include stamp duty, registration fees, additional amounts payable in respect of variations to the house design requested by the buyer or any other incidental fees associated with the acquisition of the land and home. Plan is subject to approval by the Principal Developer and Local Authorities. Additional costs may apply for bushfire, acoustics, N3, easements or additional covenant requirements and retaining walls. Coral Homes reserves the right to withdraw this package at any time, prior to entry into a contract, without notice. QBCC 50792/1014053, OFT NSW 62084C, BLD260339.